

A few words from Donna Maxine

I have been using the Cards for many years and have always regarded them as a “wise old friend” with great knowledge. Used properly, the Tarot Cards can provide very practical guidance for the future and a deeper insight into situations and ourselves, which can help us, understand and deal with emotional and practical problems or issues.

I have been teaching the Tarot for many years, and many of the students that chose to learn with me have gone on to become professional readers. Some of them have also become very good teachers. Even if you have only decided to learn about the Cards for personal guidance, or to help friends, I’m confident you will find the White and Saunders Tarot of Divine proportion enlightening and helpful.

The pictures in the White and Saunders Tarot cards are easy to understand, I advise you to learn the background meanings first as the symbolism is the same in the majority of cards, so if you can understand what the background of the picture is explaining to you – you will be truly ‘reading the cards’ as opposed to learning the meanings but not really understanding what they are saying to you.

In the White and Saunders tarot you will also notice in several cards there are small symbols in the pictures, the individual meaning of these are described with each card, but you can also buy a symbol book and do further research on the meanings.

Learning the Tarot is not just about learning the meanings of each of the Cards; it is as much about a journey of personal discovery and connecting with your higher self and intuition (which is always your best guide). When you are doing readings, intuition plays a large part, and this should develop as your confidence in your own psychic ability grows.

There are so many combinations of Cards that remembering them all can be a daunting prospect. I have always found it helpful when learning to relate them to people and situations I know, and to practise on friends and people I feel comfortable with.

I have personally gained a great deal of understanding, emotionally and spiritually, from working with Cards and I hope that this book helps you in the “Quest” that is as much about understanding yourself and dealing with everyday life as it is about predicting the future.

Donna Maxine

Different Uses of the Tarot

There are many different uses for Tarot cards, predicting the future being the most widespread use. The Cards are a very good "self help" tool, as they show you your soul's path in this lifetime, so if you are feeling confused, you can choose a Card and use its meaning to guide you emotionally, financially or just to get some general advice - it is very important not to become too dependent on the cards and start living your life only on what they say - they are to be used the same way you would follow road signs to reach a destination, as a guide to what is up ahead on the road, but ultimately you are responsible for your choices and reactions when driving.

Combining Clairvoyance or other psychic abilities with the cards is very positive. The cards are used as a tool to tune into psychic intuition, the more you use them you will find your psychic intuition becomes stronger, when you are doing a reading if certain thoughts pop into your mind that are not related to the cards you have chosen that would be your intuition guiding you.

Counselling using cards is a very popular and helpful way of using them. This way the reader uses the cards to encourage the Questioner to analyse their own thoughts and feelings, and to help point out underlying problems, you can also use them if you are a healer as they can help show what is emotionally causing the physical problem.

Many readers will combine the two methods, depending on what they feel the Questioner needs. If you want to use the cards mainly on the Counselling side, there are many books that deal specifically with that method.

The Cards are also a good tool to use for meditations, either privately or in groups. Picture yourself inside a particular card. Study the various symbols and how they relate to you (this is also a good exercise for learning the meanings of the Cards). After the meditation, write down your thoughts and feelings.

Some people still use the Tarot Cards to play games, and packs can be bought specifically for this purpose.

Whatever you plan to do with your Cards, you will develop your own style over a period of time and be able to judge what would benefit your Questioner the most.

KARMA & PAST LIFE

You will notice that I refer many times to Karma.

The 'karmic law' that we relate to in our daily lives is formed on the basis of the universal law of cause and effect and originates from the eastern religions of Hindu and Buddhism .

The basic principles of Karma that most people can relate to are " YOU REAP AS YOU SOW" which basically means what you have 'given out' in one life you will get back in this one and every action we do comes back 'tenfold' which is either ten times better or worse than what we have done. It is frequently referred to as "WHAT GOES AROUND COMES AROUND".

Often we experience what we call a "karmic test" which is usually when a situation (often more than one aspect of your life will go "pear shaped" at the same time finances, relationships, health etc) seems to be outside of your control You can also have 'Mini Karmic tests' which you can create and deal with in this life time. (I.e. if you were to steal something in this life time within the next few years you will more than likely be burgled). If we apply the laws of Karma in this lifetime, there will be fewer lessons to learn in the next lifetime.

We have Karmic "Tests" and Karmic Gifts. We also have Karmic relationships where we have to experience different "lessons". If you look at different situations you have experienced in your lifetime, you will find that although the people will have changed and the scenarios will be different, the main principle (lesson) is the same. When you change your reaction you have broken your cycle and passed the "test".

You will also find in your life many people you connect with immediately or dislike on sight. These are also past life influences. The Tarot cards can often help to point this out, thereby helping us to understand the situation or our reaction to it more clearly. The swords from the minor arcana relate often to karmic situations, so if they are present in a reading, it can just help the questioner understand what is happening to them in an emotional relationship, and sometimes just helping them realize it is a karmic test for them can help them react differently and move on.

You are born with a Soul purpose that you have chosen before you come down to earth that is called your Dharma which is the same purpose that your Soul does in every lifetime i.e. to be a teacher, helper, scholar, etc. Along the way your Soul is also here to learn the lessons that it has chosen for this particular lifetime, the chariot card (number 7) is the one that means the questioner is going on their dharmic path so when it comes out in a spread, it can help the questioner understand there is a 'bigger purpose' going on in the situation they have enquired about.

.

Getting the best results from your Cards

- When you first get your cards, try to handle them as much as possible. Contrary to popular belief you do not have to sleep with them under your pillow – in fact I would advise you not to do this as it can bring on very vivid dreams!
- It is advisable to wrap the cards in a silk scarf; this protects them from all of the general vibrations going on. Some people find that the cards work better if they are kept in a wooden box as well. Placing a crystal on the Cards can also help “charge up” the energy.
- It is very important when you have finished a reading, to make sure all of the cards are the right way up before you put them away. It can disrupt their vibrations if they are put away “mixed up” and this can in turn affect the way they work.
- Don't let anybody else borrow your cards to do a reading for them self if you are not with them. Only let people handle them when you are doing a reading for them and you have asked them to shuffle the cards, as the cards will become attuned to your vibration, so another person trying to read from them will disrupt their vibration.
- WORD QUESTIONS CLEARLY AND PRECISELY: It is tempting to keep asking the cards the same question until you get the answer you desire. This is a pointless task, and after three times of asking the same question the cards will not give an accurate answer. If the moon (card 18) comes out reversed at the start of the reading, it means the cards do not want to answer the questioner today, it can be because the questioner has been consulting the cards too often.
- If an unavoidable tragedy is indicated by the cards, you must not worry the questioner unnecessarily, especially if the cards in the spread are mainly minor cards, as often events can be changed.
- RESPECT YOUR CARDS: If you treat them as a wise and very knowledgeable friend, your Cards will respond to you and offer sound and reliable guidance.
- You can write on your cards with a fine tipped marker pen while you are learning from them – it does not interfere with the way they work and can be helpful.
- To build up your trust in the cards it can be a good idea to keep a tarot journal – write down what cards came out in relation to a particular question and then you can refer back to the notes when you know how the situation turned out and ‘see’ what they were trying to tell you! In this modern day and age most people find it easier to take photographs of the spreads and then refer back to the photos!

Background symbols and meanings

Mountains or peaks	Challenges that need to be overcome The higher the peak the bigger the challenge.
Water	Subconscious mind. Emotional issues that Affect the questioner. The inner child.
Rivers	Go with the flow of life.
Walls or buildings	Material security (such as houses, cars)
Bridges	Going to a new, better way of living their life.
Flowers & crops	Spiritual or emotional growth
Tree's	Security that will last for many years, family.
Green grass	Positive aspects around them.
Crown	Ego (A person's own actions affect situations).
Dolphin	Developing intuition / subconscious mind
Salamander	Being connected to cosmic energy/ a fire spirit
Butterfly	Transformation, positive thinking
Cat	Intuition
Angels	Higher guidance, protected by Spirit guides.
Lemniscate	Infinity symbol - bringing knowledge back from Past lives.
Pentagram	Five pointed star, A symbol of protection. When reversed, it indicates negative forces.
Clouds	Confusion. Not seeing the whole picture.
Sun	Positive thinking, a bright outlook
New or crescent moon	New beginnings
Fruit (apples)	Abundance

0

THE FOOL

0



Planet Uranus

In most packs of cards we see a young man stood on the edge of a cliff. In the white Saunders pack, we have a similar image but this young man is dressed in a jester's outfit with two totally different sides to it - representing the two sides of a person, the mind and the soul - he is stood on the edge of a cliff looking out over the horizon - a cat is sat at his feet - representing his intuition, telling him not to step out further, there are some steps further up taking him to a path that leads to a house (representing security) - he could have either just left the house and climbed up the steps towards a new adventure, or it could be telling him if he looks around him and takes one step at a time slowly he will reach the security the house represents. He is carrying a bundle on a stick to represent his past life knowledge - but also all the knowledge he has gained from his journey so far in this lifetime. The sun is shining brightly in the sky indicating he is entering a positive time and has an optimistic outlook - there is a flower of life symbol in the sun telling us whatever path he takes is part of his soul's journey, the bird behind him links to his mental freedom and his ability to go to an 'elevated position'!

UPRIGHT

KEY POINTS: Spontaneity, Risks, Look before you leap, Innocence

When the Fool comes out in a reading, it shows that the Questioner is about to take a risk, either emotionally or financially (depending on the surrounding cards), which will turn out fine as long as they look before they leap.

The Fool is the first card of the Tarot pack - he also links in with the Hermit and the Hanged Man. They all represent the Soul on its journey of life and have a much deeper spiritual connection when they are all in the same spread. The Fool is the innocent, setting out on a new journey, so it is just warning the Questioner not to be too impulsive. Any new ventures will be successful as long as everything is in place and they do not get "carried away" with enthusiasm without seeing the complete picture. Also, if the Questioner is enquiring about somebody they have just met, this card tells them to get to know the other person a bit better before entering into a relationship....especially if it is an internet romance!

REVERSED

KEY POINTS: Childish behaviour, Accidents, Recklessness .failure

When the Fool comes out reversed in a reading, it is a strong warning that the Questioner should be very cautious at this time. If they behave recklessly, it could lead to tragic accidents. If they were thinking of making any major changes in their life at this time, this card would advise them against it. At the very least, they would end up feeling foolish and at worst it would mean complete failure. It shows that at the moment the Questioner or the people around them could be displaying childish behaviour.....and if they have just met a new person they should be very wary of entering into a relationship until they know them better, otherwise they will regret it in the future..

THE FOOL'S INFLUENCE IN A TAROT SPREAD.

THE QUESTIONER:

If the Fool comes out in position one in a spread to represent the questioner, it would show they are ready to enter a more positive phase of their life. As the World is the last card of the Major pack and Fool is the first card, if they both appear in a reading together that is a good connection as well because that is the end of a big cycle. This is especially true if the HERMIT or HANGED MAN are in the same spread.

LOVE

If it is the first card in a spread relating to their Love Life (or in position 2 of a General spread), it will mean that the Questioner - or the person they are enquiring about, has been through a separation and he/she is just ready to start again and will need to take things slowly for a relationship to work. If they have just met somebody it would be advising them to get to know the person better before making any plans. If it comes out in a spread enquiring about an existing relationship, they are making more effort.

MONEY/FINANCIAL MATTERS

If it comes out in a question relating to money (or position 3 of the general spread) it will mean they are taking a new positive approach to finances. It advises them to be cautious in financial ventures. If it comes out reversed it would tell them to not proceed with new financial commitments and make sure they fill out their paperwork properly.

WORK

If it is the first or last card relating to work matters,(or position 4 of the general spread. It would tell the questioner not to be too hasty to change jobs or go into any new self employment ventures. Reversed, it advises them to watch out for accidents.

HOME

If it comes out in a question about moving home, it would tell the questioner not to rush anything through and take time to make sure they get the right house for them. It also advises them not to tackle any home improvements at this time.

HEALTH

If it comes out in a health spread, (or position 5 of a general spread) it can mean take extra care to avoid accidents. If it comes out reversed, it can relate to the questioner could be suffering from panic attacks or anxiety.

POTENTIAL OR NEAR FUTURE

If it comes out in a position that means the Near Future it will mean they are nearly ready for his/her new beginnings, but they are not quite there yet.

SPIRITUAL MEANING

The fool, the hermit and the hanged man is the highest spiritual sequence of the pack and would show the questioner has been through a time of big changes which would have brought about a new way of thinking.



Planet:Mercury

Month January

In most packs of cards The Magician shows a man standing before a table with a wand a cup, sword and coin on it. In the White& Saunders pack he is an alchemist performing a ritual. He is holding a wand in one hand (to represent ideas and new ventures and ability to communicate to others) and a sword in the other (indicating he has the intelligence to work through problems logically) although the tip of the sword is not visible, showing us that he is not thinking from his highest perspective yet. There is a coin (money making ability) on his cloak, indicating he has the skills to provide for himself and be successfully self employed. On the table in front of him there is a cup (ability to love) but it is hidden from his view by the spell sheet in front of him. He has the Lemniscate (infinity symbol) over his head to show that he is bringing infinite knowledge from a past life. He is using Spiritual energy to help guide him; he is also using the earth's energy to stay grounded represented by the sword pointing downwards.

UPRIGHT

KEYPOINTS: manifestation. Learning, Communication, Confidence

This card indicates the questioner has all the tools needed to achieve what they want in any area of their life. If they are thinking of starting something new - It is advising them to" Go for it!" - especially if they are thinking of starting a new business or studying something that could lead to self employment, often it can indicate studying alternative therapy, astrology, etc. At work there could be promotion, or a chance to go on a course of some kind. Because the card represents somebody who is so good with communication skills, the Magician as a person can be a manipulative partner or friend, but not usually with malicious intentions.....it can mean the questioner will be practising manifestation through positive thinking, creating the life you want with the power of the mind and learning to live in the now. The questioner will bring about their own success as long as they have confidence in their own abilities.

REVERSED

KEY POINTS: Conman, Negativity, Lack of Confidence, panic attacks

When The Magician is reversed, very low self esteem and negative thinking is stopping the questioner from taking a risk with any new ventures. It can mean anxiety leading to panic attacks, so they must try not to over commit them self at this time. If it represents a person in their life, it is warning them not to be talked into doing things they don't really want to do. It also shows a lack of communication or understanding. If the questioner wanted to start a new project and this card came out reversed, it means that they do not have the correct skills at the moment. If a new person comes into their life they should not trust them if this card appears. They must avoid using magic to influence people or events at this time, as it could cause long lasting problems for them

THE MAGICIAN'S INFLUENCE IN A TAROT SPREAD.

THE QUESTIONER:

If the Magician comes out in position one in a spread to represent the questioner, if they are thinking of starting something new, in business or study, they have all the 'tools' they need to succeed and will bring about their own success.

LOVE

If the magician comes out as the first card in a spread relating to their Love Life (or in position 2 of a General spread), it is advising them to take care not to be talked into doing something they don't want to by partners or family members, they don't usually have malicious intentions, but they manage to twist things to their way. If they have just met somebody new let actions speak louder than words and not to believe everything they are told - especially if the 7 of cups is in the same spread.

MONEY/FINANCIAL MATTERS

If it comes out in a question relating to money (or position 3 of the general spread) It advises the questioner to be careful of signing any paperwork etc and look at the small print. If it comes out reversed it would tell them to not trust anybody who is trying to sell them something or not to get involved with another person on any financial matters. They must also be as honest as possible themselves financially.

WORK

If the magician was the first card in a question relating to work matters,(or position 4 of the general spread.) it can indicate the questioner is studying something that will lead to new self employment ventures, (often the magician relates to study of an alternative subject astrology, etc.). In any other position in a work spread it could mean promotion, or a chance to go on a course of some kind.

HOME

If it comes out in a question about moving home, it would tell the questioner not to exaggerate on any mortgage forms. Otherwise they will work from home.

HEALTH

If it comes out in a health spread, (or position 5 of a general spread) it tends to refer to allergies that affect the chest or hay fever. It also links to the THE KUNDALINI -, the questioner must ensure they are grounded at all times.

POTENTIAL OR NEAR FUTURE

It shows they have the ability to turn any situation to their advantage.

SPIRITUAL MEANING

It shows the questioner would have a talent with astrology or numerology.

2 THE HIGH PRIESTESS 2



Month:
February
Planet: The
Moon

UPRIGHT

In most packs of cards The High Priestess is shown sitting between two pillars, one black, and one white. These represent “Boaz & Jakin” or “Alpha & Omega”. The black pillar relates to the passive feminine principle of the subconscious mind/intuition (YIN); the white pillar relates to the masculine principle of reason and consciousness (YANG). In the white and Saunders pack she is wearing a mask indicating she ‘hides her true feelings’ - we cannot ‘read’ her emotions or know her ‘secret thoughts’ – although in the reflection of her, we can see her true face. She has a new moon wrapped around her body and is staring at her reflection in a full moon and is also wearing the triple goddess symbol in her hair to show that she is tuned in to the power of the moon and also shows the link with female cycles, the subconscious and intuition. There is a night sky behind her and you can just make out the sea in the background - as water links to emotions it would show she has very deep emotions going on under the surface. There is an orb on her lap, which can show her ‘looking into the future’ but also linking with the power of guides or angels.

KEY POINTS: Secrets, psychic intuition, counselling, study, healing

The High Priestess represents psychic or alternative studying or healing (so it is a very good card to turn up if you are learning to read the cards). It shows that the Questioner is not in possession of all the facts of a matter at the present time and so shouldn't jump to conclusions....although if The Moon card is in the same spread it indicates either there are secrets being kept from the questioner – or they are keeping secrets from others,

The card also represents Counselling or impartial advice that would help to point the Questioner in the right direction.

As a person, it represents an outwardly cool woman who hides a lot of her passions. It also points to letting go of inhibitions, and is a very sexual card. in a man's reading it shows the type of woman they will be involved with.

It can also indicate the questioner needs scans or x-rays in health matters.

REVERSED

Irrational thoughts, incorrect information, lesbian

The High Priestess reversed can mean there are a lot of arguments going on either with or around the questioner and they could be having uncontrolled outbursts of emotions. Any secret the Questioner is trying to keep will be revealed. Sexual frustration or confusion is also likely, and any advice you are given at this time is most likely to be wrong. Also when reversed it can indicate a lesbian or bi sexual (only with Knight or Queen of cups reversed near the card.)

If you are trying to develop psychic or alternative skills, make sure your motives are correct, and keep away from anybody who is meddling in black magic, or trying to manipulate with spells.

THE HIGH PRIESTESS INFLUENCE IN A TAROT SPREAD.

THE QUESTIONER:

In position one in a spread to represent the questioner, it means there are things going on 'behind the scenes' that they are not aware of. For a woman it would mean that she would give advice to other people. They could be studying.

LOVE

If it comes out as the first card in a spread relating to their Love Life (or in position 2 of a General spread), there will be a lot of passionate feelings but the questioner is suppressing them. It also means there can be things happening that they are not aware of, if the moon is in the same spread it can mean deception around them. If the HEIROPHANT is in the same spread it shows a soul mate relationship, and shows they have been together in a past life. Also when reversed it can indicate a lesbian or bi sexual (only with Knight or Queen of cups reversed near the card.)

MONEY/FINANCIAL MATTERS

If it comes out in a question relating to money (or position 3 of the general spread) It can mean there are things to be revealed that will help the questioner make financial decisions. It can also show they will be taking impartial advice. When reversed it would tell them to seek a second opinion. If they are hiding things financially, this card reversed will show it will all be revealed.

WORK

If the high priestess is the first card in a question relating to work matters, (or position 4 of the general spread.) it can indicate the questioner is studying something like counselling or hypnosis that they will pursue as a career. In any other position in a work spread it could mean a woman will help them.

HOME

In a question about moving home, make sure they have a detailed survey.

HEALTH

In a health spread, (or position 5 of a general spread) it often means they will need to have a scan or x-ray. In an outcome position, They would benefit from healing.

POTENTIAL OR NEAR FUTURE

Events will happen that will shed light on a situation, the surrounding cards will show if they are positive or negative.

SPIRITUAL MEANING

It shows the questioner could do spiritual healing and is naturally psychic. It also links to the THE THIRD EYE CHAKRA

3

THE EMPRESS

3

**Planet: Venus****Month: March**

In most packs of cards, The Empress is usually represented by a pregnant woman to show fertility and the link with the mother. She is shown sitting in a field of corn or wheat, which again represents growth and fertility. In the White & Saunders pack, we have a young heavily pregnant woman sitting on a stone seat (to represent material security) with nicely organised fields and flower beds around her – showing us she likes things to look nice and worries what people think. The trees in the background relate to the different generations of the family and shows whatever the questioner is doing now will last for a long time. She wears a jewelled crown to show the material security she needs. The water in the background relates to her emotions, and the bridge tells us she is going into a new phase in her life. The egg like symbol in the corner of the card is a fertility symbol, representing physical and spiritual fertility. The fleur de lys symbols on her dress represent her spiritual growth and peace and harmony – the fact they have a strong link to French royalty also represents her past life as a lady of grandeur!

UPRIGHT**KEY POINTS: Home comforts, Pregnancy, Mother, material Security**

The Empress is traditionally a card of the “earth mother” relating to motherhood and birth, and if it appears with other conception cards (ace of cups/ ace of wands) it is predicting pregnancy either for the questioner or somebody close to them. The card also represents material comfort and security, so if you have been struggling financially, it is a good card to have. It is also an excellent card to appear if you are moving home, as it shows you will have a very happy and comfortable home and will be happy with the new home.

The Empress is a good home-maker in general, so if it represents a person, she will be a woman who loves nurturing people, plants and animals. She can also represent the questioner’s mother.

REVERSED**KEY POINTS: “Women’s problems”, Domestic problems, Insecurity**

When The Empress is reversed, it means “women’s health” issues, that need paying attention to, it could be the questioner or somebody close to them that is experiencing these problems - it can also mean problems with pregnancy; with associated Cards it may mean miscarriage or termination. They will be having problems at home either with their family or with the house they live in, often they can be struggling financially.

It can also mean they have (or has had) an overbearing or strict mother whose behaviour has left them insecure. There is a very dissatisfied woman represented here, the surrounding cards will show who it is.

THE EMPRESS INFLUENCE IN A TAROT SPREAD.

THE QUESTIONER:

If the empress comes out in position one in a spread to represent the questioner, it means the questioner is a good home-maker, who loves nurturing people, and animals. They will have family around them and could be going into a very abundant time in their life. It also shows there could be a baby being born in the immediate family -depending on the questioners age, it could be a grandchild not necessarily them having the baby, especially if the sun is directly next to it.

LOVE

If it comes out as the first card in a spread relating to their Love Life (or in position 2 of a General spread) they will be happy in their emotional life and family will be important to them. If the six of cups is directly next to it they would be spending a lot of time with their mother. If the sun was next to it, they would be thinking about their children. If the six of cups is reversed, It can mean an overbearing mother.

MONEY/FINANCIAL MATTERS

If it comes out in a question relating to money (or position 3 of the general spread) it is a very good card to have, as it represents material comfort and security, so if the questioner has been struggling financially, things will be improving.

WORK

If it is the first card in a question relating to work,(or position 4 of the general spread.) the questioner will be working from home, or will be earning an income from their home somehow, maybe they are renting out a home, or running a b & b .

HOME

It is an excellent card to appear if they are moving, as the home they will be moving to will be better When reversed, they will have problems at home and they should be careful to check out the area they are planning to move to.

HEALTH

If it comes out in a health spread, (or position 5 of a general spread) if it appears with other conception cards it is predicting pregnancy. When reversed, it means "women's health" issues, that need paying attention to – it can mean problems with pregnancy; with associated Cards it may mean miscarriage or termination.

POTENTIAL OR NEAR FUTURE

It shows they will be going into a time of abundance, emotionally and financially.

SPIRITUAL MEANING

the questioner could do spiritual or animal healing. It links to the sacral chakra.



Astrological sign; Aries

Planet; Mars

Month: April

In most packs of cards, the Emperor is usually shown as a stern looking man sitting on a throne, to represent authority and material security. In the White & Saunders pack he is represented by a general, indicating power, he is standing up to represent he is willing to become involved in any new projects himself and 'put his best foot forward'. We can only see him from the side view to symbolize the fact that we can never really know him fully, or know what he is really feeling. His throne is decorated with a Rams head, which relates to the masculine strength of the Card, the ram also links to the star sign Aries. The Crown he wears represents the "EGO" and the orb he holds in his hand shows material wealth and status is important to him. The landscape behind him is quite barren and mountainous, representing challenges that need to be overcome, but there are steps going between the mountains, showing us he is on the way up in his career path and will be 'rising to an elevated position'.

UPRIGHT

KEYPOINTS: Authority, Fatherhood, Promotion or Self Employment

The Emperor can represent a powerful, independent woman, but is usually symbolic of a proud man who likes to be in control of his destiny. He is a good boss and is often self-employed. As a husband or partner, he will provide a lot of material support, but isn't very good with deep communication or romantic gestures.

He is an authority figure; depending on the surrounding Cards, he can be trouble or help from authority, but it nearly always means the questioner will have to pay attention to official matters.

The Emperor is The Empress' male other half, so these two cards together show a good partnership, but they would have to develop better communication for the relationship to reach its full potential. The Emperor also represents fatherhood, or a father figure who has a strong influence on the Questioners life, the surrounding cards would show if it is a positive or negative influence.

NB: If the 6 of cups or 10 of coins are present in the same spread it is a male relative (usually father).

REVERSED

KEY POINTS: Control freak, Problems with authority, issues with father

The Emperor reversed shows a problem with authority, it also represents a lot of domestic problems with males. It can mean a domineering father whose behaviour has created a severe lack of confidence in the Questioner As a partner he can be a bully or a tyrant who controls with moods and emotional blackmail. At work, it can show an unsympathetic boss, or somebody who does not really know how to relate to other people in social situations.

THE EMPEROR'S INFLUENCE IN A TAROT SPREAD.

THE QUESTIONER:

If the Emperor comes out in position one in a spread, it would show that they are a strong person that will either be self employed or in a position of power. If you are reading for a woman it would often represent they have a lot of responsibility.

LOVE

If the Emperor comes out as the first card in a spread relating to their Love Life (or in position 2 of a General spread), it usually means they have an older partner, - especially if the card the ten of pentacles is directly next to it. These men are very typical of 'an old school mentality', and are not always good at talking about their feelings. However if the cards either the six of cups OR Judgement was directly next to the Emperor it would represent the questioners father.

MONEY/FINANCIAL MATTERS

If it comes out in a question relating to money (or position 3 of the general spread) It would relate to authority, especially if the card Justice was nearby, the questioner could be having to deal with official paperwork - vat etc. It also means the questioner needs to seek advice from a bank manager etc.

WORK

If the Emperor was the first card in a question relating to work matters,(or position 4 of the general spread.) it can indicate they are self employed and about to start a new venture. In any other position in a work spread it could mean promotion, or their boss. If the card is reversed it would mean problems with their boss.

HOME

If it comes out in a question about home, it would usually relate to their partner, so you would have to look for the surrounding cards. If it was reversed on the home position, it would mean they could be being blocked with things like planning permission, but if either the six of cups OR Judgement was directly next to it, the questioners father could be a problem or coming to live with them.

HEALTH

If it comes out in a health spread, (or position 5 of a general spread) it tends to refer to seeing a specialist. It can indicate problems with the head/jaw area.

POTENTIAL OR NEAR FUTURE

It shows they have the ability to deal with any problems they encounter and they will have the support of a strong man.

SPIRITUAL MEANING

The emperor in a spiritual spread can mean they work as a self employed therapist.



Astrological Sign
Taurus

Planet: Venus

Month: May

In most packs of cards the hierophant is shown as a teacher with a couple of pupils at his feet. In the White & Saunders pack he is represented by a saintly figure in a stained glass window – reminding us of the cards link the church and organised religion and also representing ancient knowledge and customs preserved for all to benefit and learn from. He is teaching the way to unlock the secrets to a better life, through meditation etc. There are two winged figures either side of his shoulders, relating to the masculine/feminine emotions and four more people surrounding him, each holding an ace from the minor arcana (a wand/cup/.sword/coin) to represent the questioner receiving higher guidance to enhance their daily life. Above his head is a white dove to represent “peace” showing that the guidance he gives is more spiritual. He gives the blessing of a “Higher Authority” but can also represent a judge or official person giving their advice or approval.

UPRIGHT

KEYPOINTS: Teacher – often spiritual, Healer/herbal remedy/ Conventional marriage

The High Priest in a reading points to conventional behaviour, such as marriage, or living with high standards. He is often a teacher, or has strong links with schools or education of some sort. When this card shows in a spread it is advising the Questioner to take professional advice. Because of his connection with “Higher Guidance”, this will often take the form of Counselling or Spiritual guidance. He also shows the questioner would benefit from healing - homeopathic or herbal medicine would be advisable. He is The High Priestess’ male “other half”, so it shows a very good partnership when these two cards come out together in a reading..... They are “soul mates”.

REVERSED

KEY POINTS: Unconventional behaviour, homosexual/ bad advice, Intolerance

When The High Priest comes out reversed, it shows that the Questioner will be living in an unconventional relationship or situation; if the king or knight of cups comes out reversed in the same spread it indicates a homosexual relationship.

If the questioner has any legal or medical situation going on in their life at this time it can Any advice they have been given – professional or otherwise – will have been wrong, so it is advising them to seek a second opinion.

It also shows that they are sometimes not listening to their own inner voice and may be being too stubborn or misguided in some direction. There could be trouble within a group or with matters concerning education or learning.

Also in health matters they should go to see their GP and not rely on alternative medicine as they may need further tests etc.

THE HIEROPHANT'S INFLUENCE IN A TAROT SPREAD.

THE QUESTIONER:

If the High priest comes out in position one in a spread to represent the questioner, it means they are a loyal person that likes conventional behaviour; they would have a solid personality. they would be spiritually aware.

LOVE

If it comes out as the first card in a spread relating to their Love Life (or in position 2 of a General spread), it shows there will be a lot of strong feelings and it means marriage and solid relationship - if they are single at the time of the reading it would say the next relationship they have would be a long term one. If the high priestess is in the same spread it shows a soul mate relationship, and shows they have been together in a past life. when the high priest is reversed it would mean the relationship they are enquiring about will not lead to marriage. Also when reversed it can indicate a homosexual or bisexual relationship if it is next to the Knight or king of cups reversed.

MONEY/FINANCIAL MATTERS

If it comes out in a question relating to money (or position 3 of the general spread) It can mean a person giving good advice that will help the questioner make financial decisions. It can also show they could be getting some help from a grant or backdated money.

WORK

If the high priest is the first card in a question relating to work matters,(or position 4 of the general spread.) it can indicate the questioner would make a great teacher or life coach, and usually works in a way that advises other people, if not as a teacher in some similar way, often probation officers and social workers will have the high priest in their work spreads. With associated cards it can mean herbal medicine.

HOME

If it comes out in a question about moving home, it can mean help from local authorities with planning applications etc. It also can relate to the questioner living in a more settled way with a partner after a time of confusion.

HEALTH

If it comes out in a health spread, (or position 5 of a general spread) it often means the questioner will be seeking help from alternative medicine, and would benefit from seeing a homeopathic Dr and healer.

POTENTIAL OR NEAR FUTURE

It shows they will be going into a very secure stage in their life and will have support from friends and family and may feel they want to help the community in some way, maybe helping out in a school.

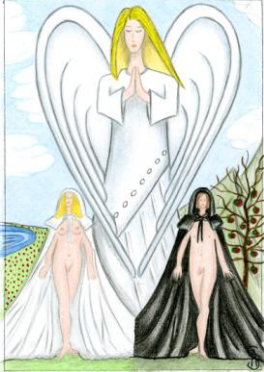
SPIRITUAL MEANING

It shows the questioner could do spiritual healing and has ability for teaching groups of people. It also links to the THE THROAT CHAKRA

6

THE LOVERS

6



In most packs of cards The Lovers is shown with a male and female, who represent Adam and Eve (although in some it is shown with a young man torn between and older wiser woman or a young beautiful one to represent choice between lust and love). In the White & Saunders pack it is represented by a couple that are naked (representing total honesty) apart from a black and white cloak – symbolic of the yin/yang energy, There is an Angel looking down on them, representing the blessings of “Higher Sources”. The Tree of Life stands behind the male, showing 12 fruits (the signs of the Zodiac), he also has hills behind him, indicating the male ‘logic’ that can cause problems and challenges emotionally. There is water on the side of the female, representing the depth of her emotions and the flowers behind her show her spiritual and emotional growth.

Astrological Sign: Gemini

Planet: Mercury

Month: June

UPRIGHT

KEY POINTS: Choice, Commitment, Higher Guidance, Angel guides.

The Lovers’ main meaning is choice. It can be a choice between love and lust or material values against spiritual. In a reading for a woman, where two male Court cards appear (or two female Court cards for a man), it will mean a choice between two partners. The choice can also be between two jobs, or two of anything that the Questioner is thinking about, it can mean a moral dilemma that has to be resolved. The surrounding Cards should point to which option would be more beneficial.

The best advice to the questioner is listen to your “inner voice” or “Higher Guidance” as the card has a strong link with an angel or higher guides – especially angels Jophiel and Chamuel, if there are other spiritual cards in the spread, it would indicate the questioner’s guardian angel is very close to them at this time, to help them with choices they are making.

The Lovers can also represent marriage or commitment with a partner, the surrounding cards would show if it is a good match.

REVERSED

KEY POINTS: Separation, Making choice for the wrong reasons, Fear

The Lovers reversed can mean that the Questioner has made a choice in love for the wrong reasons, i.e., money or lust instead of love. It can also mean a separation in a relationship; the surrounding cards will point to the correct meaning.

It can also mean that the Questioner (or the person they are enquiring about) has been so badly hurt in the past that they are too frightened to get involved in a new relationship for fear of being hurt again.

With any major decisions, this card reversed is advising you to wait before entering into anything. With certain surrounding cards it can point to an obsessive partner, so be careful with any potentially new romantic relationships – especially if the DEVIL card is near to the lovers reversed in the spread.

THE LOVER'S INFLUENCE IN A TAROT SPREAD.

THE QUESTIONER:

If the lovers comes out in position one in a spread to represent the questioner, it can show they have to make choices in their life at this time - not necessarily connected to love, the surrounding cards would show what the choice is about.

LOVE

If it comes out as the first card in a spread relating to their Love Life (or in position 2 of a General spread it can show they will be making serious choices that will affect their emotional life. If the death card or the Ten Swords card is directly next to it in the spread - they will be ending their relationship. However, if the two or three of Cups comes out directly next to the lovers - it can mean they will be getting engaged or married. If the four of wands is next to it, they would soon be living with a partner. If there are two kings/queens in the same spread it can show a choice between two different people.

MONEY/FINANCIAL MATTERS

If it comes out in a question relating to money (or position 3 of the general spread) it shows they are making choices financially. It can also show they will be joining their finances with a partner.

WORK

If it is the first card in a question relating to work,(or position 4 of the general spread.) it can indicate they will be having to make a choice between two jobs. However if the two of cups is next to it, they could meet a love partner through work, or plan to work with their partner.

HOME

If it comes out in a question about moving home, it usually means they will be planning to move with a partner or will be making a choice about living with a partner very soon.

HEALTH

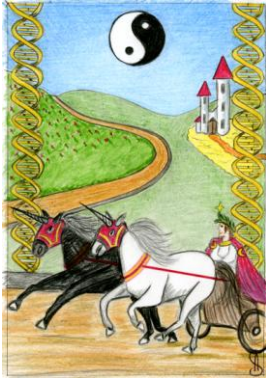
If it comes out in a health spread, (or position 5 of a general spread) it often means chest infections. If the tower card is directly next to it, this can show broken arms/wrists and accidents to the shoulder, as they are the areas linked to this card.

POTENTIAL OR NEAR FUTURE

It shows they will be making a choice that will affect them emotionally. the surrounding cards will show if it is a positive or negative decision .

SPIRITUAL MEANING

It shows the questioner could link with angels more in the coming months. They could be receiving 'white feathers as a sign from the angels they are on the correct soul path. .



**Astrological
Sign: Cancer**

Planet: The Moon

Month: July

UPRIGHT

KEY POINTS: Willpower, Travel, Conflict, Vehicles, Moving, dharma

The Chariot is a past life card, and often shows that the questioner is coming out of a Karmic "test", it can also indicate they are following their 'dharma', which is what their soul was born to do. (Dharma indicates the "role" your soul has had every lifetime, similar to your soul's "mission" in life.)

It normally appears in a reading after a time of chaos when the Questioner feels pulled in two directions and unable to make decisions. They will need a lot of willpower and self-control to redirect their life.

Because of its association with travel and vehicles, it can mean a holiday or a move of house, depending on the surrounding cards. It can sometimes simply mean buying a new vehicle. It also has a strong link with cellular healing and releasing inherited memory patterns, so if the questioner has been having a repeated cycle in their life, it would be advisable for them to have a healing session to release these patterns.

REVERSED

KEY POINTS: Delays, Frustration, Selfishness, Mass Confusion

When reversed The Chariot can show that the questioner has lost control of their emotions. With certain other surrounding cards and in extreme cases, it can mean a nervous breakdown. Otherwise, the lack of self control can lead them to behave selfishly with loved ones or close friends, as they will only be able to see things from their own point of view.

If the questioner is planning to travel it indicates a lot of delays and frustrations, and advises them to take great care when driving to avoid an accident. Because of its links with past lives, The Chariot in this position also means the questioner is experiencing a Karmic test and their reaction to the situation they are in is not

In most cards the Chariot is shown with a man (Charioteer) steering two horses or sphinxes away from a town. In the White & Saunders pack we see our charioteer (representing the questioner) steering two unicorns into an unknown destination. Unicorns symbolise power, purity, healing, wisdom, self-knowledge, renewal of hope and eternal life. They are black and white; the black represents our negative emotions and the white relates to positive emotions. They can also represent the YIN/YANG of the physical and emotional body. The Charioteer is steering the animals without reins, using his mind (willpower) to control them. The house he is moving away from represents material security, indicating we have to be prepared to release the security we know to follow our 'higher path'. The Chariot he is steering represents our body. The Star over his Third Eye shows Spiritual Guidance. The D.N.A. double helix either side of the picture symbolises the past life and inherited ancestors cell memories, and the renewal of the soul.

helping them.....in other words they are making the wrong choice!

THE CHARIOT'S INFLUENCE IN A TAROT SPREAD.

THE QUESTIONER:

In position one in a spread, they may have had a time of conflict and can be feeling very confused which way they want to go. If the surrounding cards are spiritual they are going on to their dharmic path and will be leaving old patterns behind. It can also mean they need a lot of willpower at this time and could think of studying.

LOVE

If it comes out as the first card in a spread relating to their Love Life (or in position 2 of a General spread it can show they will be very confused about a relationship and their head and heart can be fighting each other. If the world card is directly next to it, they could be in a long distance relationship or thinking of moving with a partner.

MONEY/FINANCIAL MATTERS

If it comes out in a question relating to money (or position 3 of the general spread) it can show they are planning to buy a new car or need to be paying out for repairs on an existing one. If the four of wands was next to it they could be moving

WORK

If it is the first card in a question relating to work,(or position 4 of the general spread.) they will be making a choice about which direction their career. They may have to travel with work, especially if the knight of wands is in the same spread.

HOME

If it comes out in a question about moving home, it is a very good card to have and they could be planning to move to another area, if the world was in the same spread they could be thinking of emigrating.

HEALTH

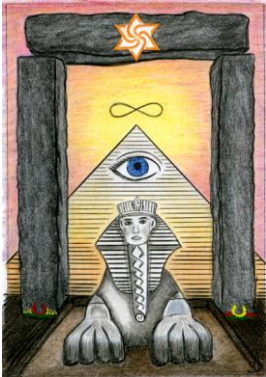
If it comes out in a health spread, (or position 5 of a general spread) it often means infections and blood cell problems . Reversed they have to watch out for accidents.

POTENTIAL OR NEAR FUTURE

It shows they will be travelling - if it is reversed it shows travel delays, if the tower is nearby they would have to be careful when driving.

SPIRITUAL MEANING

It shows the questioner will be going on to their dharmic path and will be working in a way that makes them feel fulfilled. They could get very drawn to understanding what type of past lives they have lived and clearing past life blocks.



Astrological Sign

:

Leo

Planet The Sun

Month: August

UPRIGHT

KEY POINTS: Courage, Self-discipline, Endurance, Overcoming illness/obstacles

The Strength card in a reading shows that the Questioner will have to be morally strong to overcome a karmic test they are experiencing at this time, often its problems within them self, such as fear, jealousy, anger, insecurity etc that are causing them distress. Even if the problems are brought about because of other peoples' behaviour, illness or outside situations it is only by using their 'strength' of mind that they will overcome them.

This is a very good card to appear if the Questioner has been having health or relationship problems, difficulties will be overcome with perseverance.

When strength comes out next to the justice card in a spread it can mean a woman is helping the questioner somehow from behind the scenes

REVERSED

KEY POINTS: Egotistical behaviour, Inability to cope, Insecurities

When the Strength card appears reversed, it shows an inability to cope with everything. The Questioner has let negative fears overtake them, and may need outside help to cope. It can also mean that they are being dominated by another person, and because of their inhibitions or insecurities they feel unable to change the situation. In a spread relating to their health it would indicate they have to change their lifestyle or negative habits, such as smoking too many cigarettes, and may feel they lack the willpower needed to overcome problems.

If strength reversed comes out with justice (either upright or reversed) in a spread it can show a woman is causing trouble behind the scenes – this can be either somebody the questioner knows or an official person who is not

In most packs the Strength Card usually depicts a woman taming a lion with her willpower (mind). The other traditional image shows Hercules wrestling with a Lion, his weapons discarded. Both versions show the taming of the Lion with willpower. In the White & Saunders pack we have a sphinx guarding a pyramid surrounded by an ancient standing stone. There is an eye in the pyramid, showing us the questioner is connecting with their higher self through dealing with challenges. This represents using ancient wisdom to help us overcome our fears, insecurities and problems. There is a Lemniscate (Infinity Symbol) over the pyramid to show us we can draw strength from "Higher Sources" and to indicate that it is a 'karmic' or past life test the questioner is battling with. The star in the stone represents an ancient or 'alien' portal – representing the questioner linking in with other worlds – or taking them self on to a 'higher plane' mentally. The flowers at the base of the stone symbolise mental and spiritual growth.

doing their job properly.

STRENGTH'S INFLUENCE IN A TAROT SPREAD.

THE QUESTIONER:

If the strength card comes out in position one in a spread to represent the questioner, it shows they have to overcome difficult circumstances out of their control and they will overcome difficulties with courage and a positive mental attitude and will probably find themselves having a positive mental approach to life after this difficult time. This is indicated by the fact there is a lemniscates in the picture showing spiritual growth.

LOVE

If it comes out as the first card in a spread relating to their Love Life (or in position 2 of a General spread it can show they will need willpower to overcome difficulties in a relationship, but they will be able to work through any problems. If they are single, the strength card often means they have had battles with an ex partner. - if Justice comes out next to it reversed, there would be a woman causing problems in their relationship.

MONEY/FINANCIAL MATTERS

If it comes out in a question relating to money (or position 3 of the general spread) it shows they are overcoming financial difficulties through perseverance.

WORK

If it is the first card in a question relating to work,(or position 4 of the general spread.) it can indicate they will be using hard work and effort to move forward in their career. They will achieve any goals they set for themselves but it will take time

HOME

If it comes out in a question about their home, it usually means they will be needing a lot of willpower to get a house balanced, the surrounding cards will show if it is practically (repairs etc) or emotionally (family etc).

HEALTH

If it comes out in a health spread, (or position 5 of a general spread) it usually means the questioner has been dealing with a health problem or is overcoming illness. If the three of swords is next to it, they would have to take precautions with their heart.

If the ten of wands is next to it, they could have stress related skin disorders.If it is reversed, they should take the warning more seriously and have to change their lifestyle or negative habits, such as smoking too many cigarettes, otherwise they could have a problem that will affect their lifestyle.

POTENTIAL OR NEAR FUTURE

Things will be balancing out for them after a difficult time, but they need patience.

SPIRITUAL MEANING

It shows the questioner will be balancing their chakras especially the SOLAR PLEXUS.

The lemniscate shows they have had to overcome many problems but it has helped them 'grow' spiritually, they will be using spiritual beliefs and communicating with their guides to help them overcome difficulties and will feel drawn to helping others.



**Astrological
Sign: Virgo**

Planet: Mercury

Month: September

UPRIGHT

In most packs of cards The hermit is represented by a robed figure standing at the top of a mountain. He is a wiser "Fool" (The Fool, Hermit and Hanged Man represent the same person, or Soul, on the Journey of Life), who has reached the "Mature" stage. In the White & Saunders pack he is represented by a Sage", who stands isolated on a snow covered mountain. The snow represents feeling "out in the cold" emotionally; the hills behind him represent challenges he has overcome. The sky is dark indicating he can't see where he is going. The Lantern he holds is symbolic of his intuition or inner guiding light that he follows. The staff represents his subconscious mind supporting him. The full moon in the sky indicates he has reached the end of a cycle and the fact that he is standing on top of the mountain means that he has reached his goals so far, and now needs "Higher Guidance". The tree next to him represents the ongoing cycle of life, although there are no leaves telling us things are feeling very 'barren' for the questioner at this time.

KEY POINTS: Soul searching, Solitude, Meditation, Spiritual Teacher

When the Hermit comes out in a reading, it shows the Questioner is going through a time of deep soul searching, reflecting on their job, relationship, lifestyle etc. They can be feeling very lonely, even if they have a lot of people around them. After reflecting on the past they will then move forward with a wise and mature attitude to life. They would benefit greatly from meditation at this time. It is also a very good card to appear for somebody if they are trying to get in touch with their spirit guides; it shows that they are going about it with the right attitude and will see positive results, often their guide is a monk when this card is present. a wise teacher can come in their life. They may feel the need to withdraw from society for a while, or sometimes they can be forced to rest - often it can be warning them of back pain. If the hermit comes out in a spread relating to their love life, it can indicate the questioner is too scared to reach out to others, often they are too proud, or expect rejection and will not take emotional risks

REVERSED

KEY POINTS: Enforced isolation, Narrow-mindedness, Fear of letting go

In the reversed position, the Hermit shows that the Questioner is going through a time of loneliness or isolation that is not through choice. If they wanted to know whether a partner was coming into their life, the Hermit reversed will show that this would not be the case at the moment. They need to face up to things that they may not want to. They can often be sulking or refusing to see another person's point of view (a typical example of pride before a fall). The card in this position also shows a great fear of letting go and the Questioner could be approaching things with a very immature attitude. If they are trying to meditate or get in touch with their higher guides, the Hermit reversed is telling them that they need to approach things with a broader mind. They mustn't block the natural cycle of change in their life, because refusing to let go of people and/or situations is making it much harder than it needs to be.

THE HERMIT'S INFLUENCE IN A TAROT SPREAD.

THE QUESTIONER:

If the hermit comes out in position one in a spread to represent the questioner, they could be feeling isolated even though they have a busy life, they would have been going through an emotional transition in their life, A partner could have left them or their children could be leaving home, or they may have lost their job leaving them feeling at a loose end. If the fool and the hanged man are also in the same spread it shows they have had a major shift and will be more philosophical about life. If it comes out reversed it shows they are being unreasonable and immature about something. If the five of swords is in the same spread they could be 'chopping their nose off to spite their face'.

LOVE

If it comes out as the first card in a spread relating to Love Life (or in position 2 of a General spread) they are feeling lonely, the other cards will show if they are in a relationship. If they have asked about a partner, they are not on the same wavelength, one of them could be sulking or not communicating properly.

MONEY/FINANCIAL MATTERS

If it comes out in a question relating to money (or position 3 of the general spread) it shows they have to look after themselves financially and can't rely on other people. It can also tell us that they are more interested in emotions than finances.

WORK

If it is the first card in a question relating to work,(or position 4 of the general spread.) it can indicate they work in a spiritual way, or they could do counselling. If it comes out in reversed in a spread about work it would show they are feeling isolated at work.

HOME

In a question about the home, it usually means they will be living alone or their partner and family could be too busy to spend time with them and they feel isolated.

HEALTH

If it comes out in a health spread, (or position 5 of a general spread) it is warning the questioner to be careful of putting too much strain on their back at this time. In any spread relating to health questions the hermit links to the back and problems with trapped nerves and the spinal column in general.

POTENTIAL OR NEAR FUTURE

If it is directly next to the world card, it can indicate the questioner will be spending time travelling or going to a spiritual country and doing soul searching,

SPIRITUAL MEANING

It shows they will be "linking" with their guide through meditation. If the 4 of swords was next to it they would be doing meditation, one of their guides is a monk .

10 THE WHEEL OF FORTUNE 10



Planet: Jupiter

Month October

The Wheel of Fortune is usually shown as a Wheel that represents the cycle of life (or Karma). In some packs, people are shown falling off the Wheel at different stages of their lives. In other packs, including the Rider-Waite, it shows a Sphinx - the emblem of feminine wisdom - turning the Wheel and dictating the fate of our life. In the White & Saunders pack the wheel is represented by a zodiac wheel surrounding the earth - this is symbolic of the cycles of life and the changes happening on a personal and global level that are being influenced by the planets. In the corners are four symbols that represent the four elements of the Zodiac; The salamander for fire/the butterfly for air/the berries for earth/the dolphin for water. in a lot of packs these creatures are the same as those depicted on "The World" card,

UPRIGHT

KEY POINTS: Fate, Good luck, big changes, Positive attitude

When The Wheel of Fortune appears in a reading, it shows a chance event or coincidence that changes the Questioner's life for the better. It tells us that a lot of things are going on which are outside the questioner's control, but events are going to turn in their favour. It can also show that somebody that the Questioner is enquiring about could have a major change in their way of thinking and behaviour towards the questioner, brought about by events around them. It is A very good card to appear in a reading, showing good luck is on its way very soon. If it comes out directly next to a coin card it can mean the questioner could have an unexpected financial windfall - this is especially the case if THE STAR is also nearby in the spread. If it comes out next to the world card it can show there will be global changes that will be affecting many things for and around the questioner, the surrounding cards will show how this will affect their life.

REVERSED

KEY POINTS: Bad luck, Pessimistic outlook, Taking unnecessary risks

When the Wheel of Fortune comes out reversed, it shows that this is not the right time to be taking any major risks. It shows that the Questioner will be experiencing setbacks beyond their control. "Fate" will seem to be blocking them at the moment and they will just have to be patient and strong until their life gets back on track. If it came out in a position that represent's the questioner (or the person they are enquiring about) It shows that they themselves, could have a very negative turn of mind that can make everything seem worse than it really is, so you would have to look at the surrounding cards to see if things really are going wrong for them, or if they are just finding it hard to cope.

THE WHEEL OF FORTUNE'S INFLUENCE IN A TAROT SPREAD.

THE QUESTIONER:

If the wheel of fortune comes out in position one in a spread to represent the questioner it would tell us they are going to be approaching things with a new more positive way of thinking and will bring a lot more 'luck' into their life. There would have been a lot of changes going on that they would not have had control of, but fate is working for them - they should expect the unexpected!

LOVE

If it comes out as the first card in a spread relating to their Love Life (or in position 2 of a General spread) if they are single it means they are going to be meeting somebody out of the blue unexpectedly, if they are in a relationship they could be having a nice surprise. Also if they have been seeing somebody that they find negative and hard to talk to, the wheel of fortune can indicate that a partner will have a change of attitude & be more positive.

MONEY/FINANCIAL MATTERS

If it comes out in a question relating to money (or position 3 of the general spread) it can show they will have an unexpected windfall, if the ten of coins is next to it in the spread they could win some money.

WORK

If it is the first card in a question relating to work,(or position 4 of the general spread.) it can indicate they will be having changes that they are not expecting, if the card is upright they will be positive changes but if it's reversed they could lose their job unexpectedly.

HOME

If it comes out in a question about moving home, it is a very good card to have and they will be guided to move to the right house, they must not force things to happen or fight against blocks, as any delays they will be experiencing will ultimately be helping them in the long run. If it is reversed there will be delays and events outside of their control, they must learn to go with the flow and let events happen when they are meant to.

HEALTH

If it comes out in a health spread, (or position 5 of a general spread)
It tends to mean they need their chakras balancing out so healing would be good for them.
. If it is next to any of the other cards that mean blood or circulation (Chariot, 9 of swords, 3 of swords) it can mean circulation difficulties.

POTENTIAL OR NEAR FUTURE

It shows that fate will be playing a big part in whatever they are enquiring about, so they should 'go with the flow' at this time in their life.

SPIRITUAL MEANING

It shows the questioner will be clearing or balancing their chakra's and they are ready to go onto their spiritual pathway. They will be more aware of the synchronicity of events that are happening in their life (coincidence) that is directing them to their correct spiritual path.



Astrological Sign

:

Libra

Planet: Venus

Justice is usually shown as a woman holding a set of scales and a sword. The woman represents the qualities of truth and virtue. In some packs she is blind (showing that she trusts her intuition and inner feelings more than what she can see with her eyes). In the White & Saunders pack, she is represented by the Egyptian goddess Maat who symbolised truth and justice and was a judge of physical and moral law. Her ostrich feather represents truth and justice – in mythology a person's heart was weighed against the feather to see if a person had led a good life! the scales represent the Scales of Justice. The crown on her head is the Ego of Authority. the jewel in the middle of the scales represents the Third Eye. The sphinxes she stands on (guarding the underworld) represent the Yin/Yang balance within us. The underworld image represents the inner fears of the questioner.

Month September/October

UPRIGHT

KEY POINTS: Legal justice, Balance, Fairness, Marriage, Karma

When Justice comes out in a reading, it shows that the Questioner may well have legal matters to attend to, but it also shows that any legal situation will go in their favour. It shows a time of balance coming into the Questioners life after a testing time. If it is present in a spread relating to romance It can mean marriage if the surrounding cards are pointing in that direction, and will mean that the marriage will be a balanced and happy one. It shows that the Questioner has just balanced out some Karmic situation (or in the process of doing so) in a fair and logical way, and is taking a responsible and balanced approach to life. This card interlinks very strongly with the Strength card, and these two cards upright and together in a reading show positive help from a woman.

REVERSED

KEY POINTS: Legal battles, unfair treatment, Imbalance, Divorce

In the reversed position, it shows that any legal battles the Questioner is currently experiencing will probably not turn out in their favour. They must also make sure that they are not breaking the law, as they will be held responsible (e.g. drink driving). It also shows that the Questioner is being unfairly treated in some way, either at work or in their personal life. It will be a very testing time for them at the moment, they are going through a karmic test, and they must try to stay as focused as possible. Because of its strong links with the Strength card, when the two come out together with one of them reversed, it indicates that a woman behind the scenes is causing a lot of problems. The

Surrounding cards will confirm whether or not this is the case.

JUSTICE INFLUENCE IN A TAROT SPREAD.

THE QUESTIONER:

If justice comes out in position one in a spread to represent the questioner, it can show they will be balancing things out in their life. When the card is upright it shows they have put as much effort as they can into things and will be getting a karmic 'gift'.

LOVE

If it comes out as the first card in a spread relating to their Love Life (or in position 2 of a General spread) they will be making serious commitments affecting their emotional life. If the three of cups or the hierophant is in the spread - they will be getting married.

MONEY/FINANCIAL MATTERS

If it comes out in a question relating to money (or position 3 of the general spread) it shows they are sorting through official paperwork and making choices financially.

WORK

If it is the first card in a question relating to work,(or position 4 of the general spread.) it can indicate they work for authority. If the surrounding cards are negative, it can mean legal actions and tribunals at work.

HOME

If it comes out in a question about moving home, it usually means they will be sorting mortgage forms and official paperwork out.

HEALTH

If it comes out in a health spread, (or position 5 of a general spread) it can show weakness around the bladder/kidney area, so it could be warning them of cystitis kidney infection etc (especially if the tower card is directly next to it.) The other meaning is eating disorders - especially if Justice is reversed, they would then need to seek professional help to balance out the link with the mind and body

POTENTIAL OR NEAR FUTURE

Things will be balancing out for them, although if they are planning to travel they should double check legal forms.

SPIRITUAL MEANING

It shows the questioner will be balancing their chakras and will be experiencing karmic balance in their life if Justice is upright in the spread they will receive a karmic gift, this can be a person that comes in to help them or a gift of some kind that will help them fulfill their dreams. If the card is reversed they will be having a difficult time either legally or emotionally, but this could be balancing out negative karma they could have created, either earlier in this life or from a past life..

12

THE HANGED MAN 12



**Planetary
Correspondence:
Neptune**

UPRIGHT

KEY POINTS: Sacrifice, Meditation, Faith, Acceptance, transition

When this card appears in a reading, it shows that the Questioner has reached a point in their life when they are prepared to sacrifice their material security to gain emotional or spiritual fulfilment (e.g., someone who gives up a well paid job they dislike to pursue a hobby as a career). They are “suspended in limbo” between the past and the future and have to contemplate where their life is going now, and what they want from it. It is an excellent card for meditation, as it shows that they will be able to tune into “Higher Guides”. This is because they now have a much more philosophical approach to life and will “let go” a lot of material worries. The Hanged Man is one of the most spiritual cards in the pack, and shows that the Questioner has learnt “acceptance” (or events they are experiencing at the present time will help them have acceptance) and is not going to hang on to unnecessary baggage. It is time to move on to new experiences, which will bring more happiness. It can show a completely new way of thinking. If the fool, the hermit are in the same spread it shows they are going through a major transition and will move forward onto a more spiritually enlightened future.

REVERSED

KEY POINTS: Materialistic attitude, Frustration, Stagnation, depression

When it's in the reversed position, it shows that the Questioner is feeling very trapped in their life and can't see how they can change things. They have lost faith, and have become too bogged down with material worries to see that a more philosophical approach is needed to help them understand how things could be changed. Often they are trying too hard to win the approval of others and have lost their sense of self-worth in the process. It can be sign of severe depression, and with surrounding cards that support this, it can mean suicidal thoughts (especially with the 9 of swords). They would be wise to seek professional help at this time. It can also show a long standing or debilitating illness that is making them feel frustrated because they are dwelling on what they can no longer do and are wasting the potential of using the mind's ability to learn new things.

The Hanged Man is most often shown as a man suspended by one leg from a tree (in limbo!). He is alive, and seems to have a smile on his face. In the White & Saunders pack he is represented by the Norse God, ODIN, who sacrificed his life to gain enlightenment and discover the “Runes”, which are another method of divination.

He is suspended between his past and future and appears to have dropped a coin to show he is releasing material security to gain spiritual enlightenment (in many packs, money or possessions are seen falling from his pockets). The tree he hangs from is the Tree of Life. The aura around his head is yellow, again showing the awakening of the mind (like a light bulb coming on). The leaves on the tree represent spiritual growth. His hands are free indicating he could release himself and change his circumstances if he wanted to.

THE HANGEDMAN'S INFLUENCE IN A TAROT SPREAD.

THE QUESTIONER:

If the hanged man comes out in position one in a spread to represent the questioner, it can show they have been feeling 'stuck' for years. It would indicate that he/she is just starting to learn the lesson of acceptance, and is now ready to change their approach to a situation to make things better for them self.

LOVE

If it comes out as the first card in a spread relating to their Love Life (or in position 2 of a General spread) it means they have been in limbo for a long time. The surrounding cards would show if it was relating to them being unable to move on from past relationships, or a current relationship that they are hoping will change. If the Ten of Swords card is directly next to it, it would indicate they haven't moved on from a past relationship. If the card directly next to it is the Six of Cups or Ten of Coins that would indicate they are making sacrifices for a member of their family,

MONEY/FINANCIAL MATTERS

If it comes out in a question relating to money (or position 3 of the general spread) it can show at the moment they haven't got the money they feel they need to do what they want to do, they can be clearing off debts from the past before they move forward. If the surrounding cards are spiritual, they will be looking to do something they find more rewarding, even if it means they will be earning less money. Although, if the card is reversed it would be advising the questioner NOT TO do this otherwise they would not be able to maintain their household bills etc.

WORK

If it is the first card in a question relating to work,(or position 4 of the general spread.) it can indicate there could be frustration with a work situation, and they are feeling stuck, but they are being guided to work in a spiritual way . They could be thinking of leaving quite a secure job to do something they will enjoy more.

HOME

If it comes out in a question about moving, it would show not much is going to change until it is the right time, so they will have to change their approach to a situation in or around their home that could have been causing them distress. .

HEALTH

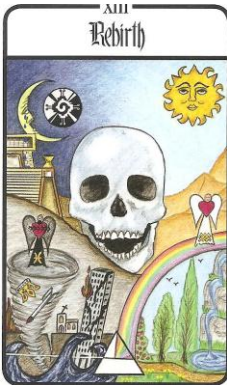
If it comes out in a health spread, (or position 5 of a general spread) it often means they have had to give up something they enjoy for the good of their health (smoking/sweets etc) If the eight of swords card is directly next to it, they could have an illness or virus which can stop them physically doing what they want to do.

POTENTIAL OR NEAR FUTURE

In the Near Future position it means they will be in 'limbo' for a while longer.

SPIRITUAL MEANING

It is the highest spiritual card in the pack and shows they have accepted the lessons they have had to work through.



**Astrological
Sign Scorpio**

Planet Pluto

**Month:
November**

The rebirth card is usually known as the Death card and is normally shown as a skeleton on horseback, holding a scythe, chopping down the old to make way for a new way of doing things. There are bodies lying on the ground and often they depict a King or a Pope to show the overthrowing of authority as we know it. In the White & Saunders pack we have a skeleton – symbolic of a crystal skull rising from the ground – there are two totally different scenes taking place underneath him – one side is showing hurricane's and flooding being guided by the angel, with an upturned crown, to show an overturn of ego or status and buildings falling down, – showing the age of Pisces coming to an end and that change has no limitations and does not heed status or religion showing that anybody is at the same risk of having enforced change in their life such as redundancy, divorce, etc. On the other side there is an angel with the Aquarius symbol on his robe (to represent the age of Aquarius we are moving into) standing on a rainbow to show that the changes will be positive and the water represents emotional balance The sun is shining on that side while the moon is on the other side showing the black/white Mayan symbol that represents change and transformation of 2012.

UPRIGHT

KEY POINTS: Rebirth, Transformation, Endings, Change

When the rebirth card appears in a reading it shows that the Questioner will have a lot of changes going on, not always of their choosing. However they will usually find that the changes are inevitable, and turn out to be beneficial. It is the ending of one phase to begin a new one. Depending on the surrounding cards, it can be drastic change, or just one area of life changing, such as a job etc. It can mean separation in relationships; or radical changes in the approach to a relationship again, the surrounding cards would confirm whether or not this is the case. If the questioner is willing to accept the changes in their life without being frightened to let go of the past, they will move forward much more quickly and begin a new way of life, often with a whole new outlook on things.

REVERSED

KEY POINTS: Enforced change, Resentment, Inability to accept changes

In the reversed position, it shows that there will be a lot of changes that the Questioner will find hard to accept. They will experience a great deal of anger or resentment at the past, and it could be stopping them moving forward with their emotions and in new relationships or work opportunities. They will be resisting the changes, which could make the experience much more painful for them. The surrounding cards should point to which area of their life is most likely to be affected by the changes, e.g., a job ending, or a relationship breaking up. The fear of change is always worse than the reality, so the Questioner should be advised to stop living in the past, and to try to let resentment or anger go, they may need professional counselling or advice especially if it is childhood matters they are holding on to.

REBIRTH'S INFLUENCE IN A TAROT SPREAD.

THE QUESTIONER:

If the rebirth card comes out in position one in a spread to represent the questioner, they will be having a lot of changes and could be finding it hard to cope at this time, the surrounding cards will show the outcome of these changes, positive cards would indicate changes for the better whilst negative cards would show they will not be too happy with the changes. If it is reversed they could be living in the past.

LOVE

If it comes out as the first card in a spread relating to their Love Life (or in position 2 of a General spread) it can show there will be unexpected changes in their emotional life. If the Ten Swords or judgement card is next to it in the spread, their relationship will end unexpectedly, but if there were positive cards next to it, it would be changes for the better. They could be entering either a new relationship or a romantic phase in their current relationship. If it is reversed they will be struggling to cope emotionally because of past events.

MONEY/FINANCIAL MATTERS

In a question relating to money (or position 3 of the general spread) It can mean changes coming for them financially - obviously if the card directly after the death was a positive one, it could indicate they could have a NICE surprise with money!

WORK

If it is the first card in a question relating to work,(or position 4 of the general spread.) it can indicate unexpected changes with work, if the tower or the 5 of coins is next to the tower it can mean they will lose their job unexpectedly.

HOME

In a question about moving home, it would mean the changes are coming very quickly, the surrounding cards would show if it is a positive or negative move.

HEALTH

In a health spread, (or position 5 of a general spread,) their joints could be causing them problems, if the tower is next to it - it is a warning of broken bones. It links to reproductive organs and if it comes out next to the empress and any aces it can mean a baby being conceived, next to the moon, it can be problems sexually.

POTENTIAL OR NEAR FUTURE

There will be big changes, other cards will indicate if they are positive or negative.

SPIRITUAL MEANING

It shows the questioner could be leaving behind old patterns of behavior to go on a more spiritual pathway. If it is next to the chariot they could also be releasing past life or ancestral memories they feel could have been holding them back.



**Astrological
Sign: Sagittarius**

**Planet: Jupiter
Month December**

In most packs of cards – including the White & Saunders pack, Temperance is represented by an angel, thought to be the Angel Michael. He is pouring liquid between two cups – one is Gold to represent the masculine principle (Consciousness), the other Silver to represent the feminine (Sub consciousness). The Aura around his head is showing him using his mind. The Third Eye is open, which shows he is learning to trust his senses. He has one foot in the water (which represents emotions) and one foot on the ground (which represents practical matters), although the ground he is on is sand, indicating he is not feeling too ‘grounded’ at the moment. The crown seen above the mountain in the background represents challenges brought about by the ego (mind). He is surrounded by a sequence of numbers known as the Fibonacci sequence, that represents ‘divine proportion’ the shell in the picture the "Chambered Nautilus" is a perfect example of this. The star fish links to the five senses and again divine proportion.

UPRIGHT

KEY POINTS: Balance, Moderation, Self Control, Meditation & Healing

When Temperance appears in a reading, it shows that the Questioner has a lot going on in their life at this time. They are likely to be burning the candle at both ends or juggling too much, e.g. two jobs or two relationships, and they need to sort the situation out before their body starts to go out of balance. They must exercise a lot of self-control to avoid over indulging in anything, but particularly alcohol or overeating. Temperance is advising them to look inside themselves with meditation and to try to find the answers within. Spiritual healing and aromatherapy would help them gain a physical and mental balance.

This card shows the ability to cope with a busy life, as long as the balance between work and play is equal. This card often comes out in the reading for a busy mum, and is advising her to look after herself a little more.

REVERSED

KEY POINTS: Over indulgence, drugs, Selfishness, Inconsistency

When Temperance comes out reversed in a reading it shows the Questioner is overdoing things. This could also include overeating or drinking too much or taking drugs (especially if the DEVIL or THE MOON card is with TEMPERANCE). The Questioner could be working in “fits and starts” and have severe mood swings that can lead to emotional outbursts with friends or loved ones. The card reversed usually means that the Questioners own actions could be causing the problems. It often signifies that as a result of overworking and socialising too much, they have burnt themselves out.

The card in this position also advises them to question their morals, as they could be acting in a dishonest manner, or being too materialistic. They will be too self-absorbed to listen to their inner voice. Depending on the surrounding cards, it can also show health problems caused by overdoing things.

TEMPERANCE'S INFLUENCE IN A TAROT SPREAD.

THE QUESTIONER:

If temperance comes out in position one in a spread to represent the questioner, it can show they are very busy and are trying to balance their emotional and work life. It is warning them to make sure they spend time on themselves.

LOVE

If it comes out as the first card in a spread relating to their Love Life (or in position 2 of a General spread) it can show they could be too busy trying to keep everybody happy and that will affect their emotional life. However if the devil or moon cards come out directly next to it, they would have to be careful not to become involved with a partner that drinks too much or takes drugs. If there are two kings/queens in the same spread it can show they are seeing two people.

MONEY/FINANCIAL MATTERS

If it comes out in a question relating to money (or position 3 of the general spread) it shows they are juggling their income at the moment and would have to guard against spending too much on socialising or family etc.

WORK

If it is the first card in a question relating to work,(or position 4 of the general spread.) it can indicate they will be doing two jobs, or trying to balance work and studying at the same time. However if the high priestess or the star is next to it, they could be starting work as an alternative therapist and really enjoy it. I often think of this card as a busy working mum trying to balance everything.

HOME

If it comes out in a question about their home, it usually means things will be a bit of a juggling act at the moment and they must make sure they are spending enough time with their children/partner etc. If it comes out reversed there will be problems at home with arguments that can spill into violence.

HEALTH

If it comes out in a health spread, (or position 5 of a general spread) it often means they will be going on a detox . Temperance relates to aromatherapy and healing so they will benefit from massage etc. If it is reversed it can mean eating disorders.

POTENTIAL OR NEAR FUTURE

It usually indicates they will be balancing their life out in a better way. However if the devil or moon cards come out directly next to it, they would have to be careful not to drink too much and avoid any recreational drugs.

SPIRITUAL MEANING

Temperance would mean you are here to be a messenger to work with angels, it also indicates the person would be a great healer.



Astrological Sign:
Capricorn
Planet Saturn
Month January

The Devil is usually represented by a horned creature (a Devil) standing on a wooden plinth, which represents material trappings or physical desires. In most decks he has two demons in human form (one female and one male), chained (bonded) to the plinth representing a person feeling trapped by something they feel unable to break away from. In the White & Saunders pack we have a woman surrounded by money/poppies/wine bottles – linking to the base nature of humans -such as drink problems, gambling, etc. She is being tempted by an apple – which is being held by a snake – to represent her kundilini chakra and the powerful emotions associated with it – but the snake is being guided by a devil – linking to the questioner’s powerful desires. The flame in the background represents passion. The reversed Pentagram & upside down cross are symbols of Black Magic, which is probably why this card has such a bad reputation!. The symbol of Saturn is above his head, representing limitation and oppression and a karmic test of some kind.

UPRIGHT

KEY POINTS: Obsession, Restrictions, Practical attitude needed, Vices

When the Devil comes out in a reading, it shows that the Questioner is tied to something or somebody they feel they cannot break away from causing them to become obsessed and fearful about the future. This could be a relationship or a mortgage they have tied themselves to that they may not really be able to afford, or it can be negative habits such as smoking, drinking, gambling etc. It is a very sexual card and it refers to our “base” nature being the driving force behind our actions. It tells us that a very practical approach is needed to move things forward. The Devil can mean that we are being controlled either by our own desires or by another person. At this time there isn’t much the Questioner can do except take just one stage at a time (Rome wasn’t built in a day). Because of its association with the Vices of life, it does signify drink and drugs but most often refers to our sexual desires.

REVERSED

KEY POINTS: Frustration, Dealing with Addiction problems

When the Devil appears reversed in a reading, it shows that the frustration or restrictions have gone on for so long that the Questioner now feels ready or could be forced by circumstances to do something about it. If they have an addiction of some kind, this will show that they are starting to break the habit. It shows that that the Questioner will find it hard to be rational about anything at this time. Depending on the surrounding cards (usually HIGH PRIESTESS reversed), it can occasionally mean that the Questioner is dabbling in the “Dark side” of Occultism, or could be trying to influence others in a negative manner. The Devil reversed also shows sexual frustration, or somebody who is quite hard or cold emotionally.

THE DEVIL’S INFLUENCE IN A TAROT SPREAD.

THE QUESTIONER:

If the devil comes out in position one in a spread to represent the questioner, it can show they are feeling trapped and stuck at this time, this can be either materially, emotionally or spiritually. The surrounding cards would indicate what or who they are feeling tied to. Because of its association with drugs or addiction problems in general if it has temperance or the moon directly next to it they could have a drink or drug problem that needs addressing. This card means they would be advised to take one day at a time to make changes slowly.

LOVE

If it comes out as the first card in a spread relating to their Love Life (or in position 2 of a General spread it can show they are in a karmic relationship, are feeling very tied to a person - usually because of a strong sexual chemistry and would have to take care not to become obsessed or 'addicted' to a person. If the eight of swords is next to it, or the page of swords 9(especially reversed) they would have to be careful of somebody becoming obsessed with them.

MONEY/FINANCIAL MATTERS

If it comes out in a question relating to money (or position 3 of the general spread) they should be careful of becoming tied through official paperwork to things they can't afford - usually to a mortgage or a loan with high interest.

WORK

If it is the first card in a question relating to work,(or position 4 of the general spread.) it can indicate they are feeling stuck and frustrated in a work situation, if the high priestess is directly next to it, they could work as a drugs counsellor.

HOME

If it comes out in a question about moving home, it usually means they could be tying themselves to a very high mortgage and should think about things carefully.

HEALTH

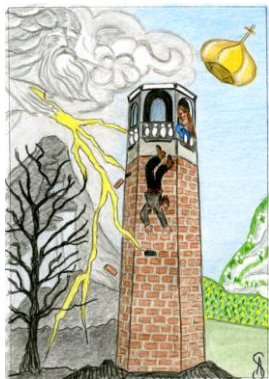
If it comes out as the first card in a health spread, (or position 5 of a general spread) it usually indicates pulled muscles or tendons in the body and is warning the questioner not to overdo exercise. This is easy to remember as the devil's chest is bare and his muscles are on show!

POTENTIAL OR NEAR FUTURE

Things will be slowly balancing out for them; they have to take things slowly.

SPIRITUAL MEANING

It shows the questioner will be clearing karma, but could be drinking or wasting money to block their inner emotions; they need to deal with past issues and open up emotionally.



Planet Mars

The Tower is usually depicted as a Tower that is being struck by Thunder and Lightning, with two people (usually wearing crowns) falling out of it. The White & Saunders pack shows a similar image, but only one of the people are falling out – The male (representing the masculine principle of consciousness), while the other one-the female (representing the feminine principle of sub consciousness), remains safe in the tower, indicating that although the questioner can feel confused and hurt by events going on – their subconscious will recognise they can ‘grow’ from these changes. The Tower itself represents the Questioner and their life. The Crown that has been knocked from the top represents the Questioners Ego, which has received an unexpected blow. The Lightning represents an unexpected shock or revelation, but we can see it is being guided by a ‘higher guide’ to indicate it is part of a spiritual growth cycle. Although the top of the Tower is badly damaged, the foundations are still strong, showing that our roots are still intact, usually indicating it is only one aspect of our life that has been affected. The background goes from dark to light.

UPRIGHT

KEY POINTS: Shock, Unexpected change, Bolt out the blue, Accidents,

When the Tower appears in a reading, it shows the Questioner that there will be a lot of unexpected changes on the way. In the past, readers always referred to it as a disaster or a catastrophic event, but this is not always the case; depending on the surrounding cards, you would be able to tell the Questioner whether it is a nice surprise or a bad one.

Because of its association with the Ego, it often means that it’s only the Questioners pride that has been hurt. It does often show that illusions about people are shattered, and that the revelations that they are exposed to will alter their way of thinking. It often changes their life or relationship permanently, but often those changes have been long overdue.

The Tower also warns of accidents, so the Questioner should be extra cautious, especially with fire and electrical items. Most often the misfortunes represented by the Tower turn out to be blessing in disguise, and can lead to unexpected opportunities that would otherwise have been missed. Expect the unexpected with this card.

REVERSED

KEY POINTS: Disappointments, Arguments, Surprise minor setbacks

When The Tower comes out reversed, it shows that although there could be a surprise or change coming, it would be of a lesser degree than when the card is upright. Alternatively, something that the Questioner is worrying about will not turn out to be as bad as they feared. It can signify arguments and tantrums, but again the outcome wouldn’t really change much in their life. The Tower reversed can also indicate minor accidents or mishaps, usually caused by the Questioner themselves. It does signify things that hurt their pride, but they would only be of a minor nature and the questioner could be over reacting to some news or a situation.

THE TOWER'S INFLUENCE IN A TAROT SPREAD.

THE QUESTIONER:

If the tower comes out in position one in a spread to represent the questioner, it can show they have had a lot of changes going on in their life recently, and are finding it hard to cope. HOWEVER it can represent an event happening somewhere in the world that could affect many people.....I have noticed just before something dramatic happens somewhere in the world, the Tower card comes out nearly every time in the first position.

LOVE

If it comes out as the first card in a spread relating to their Love Life (or in position 2 of a General spread it can show there will be a lot of unexpected changes in their emotional life. If the death card or the Ten Swords card is directly next to it in the spread - that could be their relationship will end unexpectedly. However, if the Ace of Cups comes out directly next to the tower - it can mean they will be meeting someone new and be swept off their feet. If the card directly next to it is the Six of Cups or Ten of Coins that would indicate they could hear some unexpected news about a member of their family,

MONEY/FINANCIAL MATTERS

If it comes out in a question relating to money (or position 3 of the general spread) It can mean unexpected changes coming for them financially - or an unexpected bill, obviously if the card directly after the tower was a very positive one, it could indicate they could have a NICE surprise with money!

WORK

If it is the first card in a question relating to work,(or position 4 of the general spread.) it can indicate unexpected changes with work, if the death card or the 5 of coins is next to the tower it can mean they will lose their job unexpectedly.

HOME

If it comes out in a question about moving home, they would be advised to get a detailed survey done as it can mean subsidence. Because the tower can mean electricity, make sure any home improvement's are done by a skilled worker. It would advise them to keep their insurance payments up as it can mean sudden unexpected things happening.

HEALTH

If it comes out in a health spread, (or position 5 of a general spread) it often means infections or virus. If the death card is directly next to it, It can be broken bones,

POTENTIAL OR NEAR FUTURE

It shows they will be having sudden changes, the surrounding cards will show if they are positive or negative.

SPIRITUAL MEANING

It shows the questioner could see spirit during meditation.

17
THE
STAR
17



Astrological Sign: Aquarius

Planet Uranus

Month: January

UPRIGHT

KEY POINTS: Hope/positive thinking, Holidays, Crystal healing, Enlightenment,

When the Star comes out in a reading, dreams can come true. It is often referred to as the Wish card, so the Questioner can expect a really happy outcome to any problems they are experiencing. If they have been ill, the Star will show that they can expect to recover with the healing and positive thinking associated with this card. This is a good card to appear if the Questioner is travelling (especially to America or Australia). It is a very creative card and encourages the Questioner to pursue any artistic hobbies. It also shows they are being looked after by "Spirit" and is a good card to come out if they are meditating or practising healing as they will be able to "tune in" to their spiritual guides. It's also a very good card to have if somebody is pursuing a creative or artistic career.

If the Questioner has been going through a testing time, this card shows things will turn out better than they could have ever thought possible, and they can look forward to the future with confidence and optimism.

REVERSED

KEY POINTS: Pessimism, Lack of Confidence, Disappointments, Delays

When the Star appears reversed in a reading, it shows that the Questioner has lost faith and confidence in anything working out. They have become very negative in their outlook, which could be making things seem worse than they really are. Because it is such a positive card, it shows that things will still turn out fine, but there could be unexpected delays. Another meaning of the card in this position is the Questioner may not be able to focus on anything long enough to finish what they started; they may also lack the necessary concentration to meditate or think deeply. Also they are blocking their own creativity because of a lack of confidence, or lack of ambition. If the surrounding cards are very positive, it means that the good times are already here, but they doubt that things could work in their favour too much and

The Star is usually shown as a naked woman (Star Goddess) pouring water from two vases, one into Water(emotions) and one onto the Earth(practical matters). The woman is sometimes thought to represent the Goddess Isis; others think she represents Pandora, who let out all the misery in the world so that we could have hope. The vases represent our conscious and subconscious mind. In the White & Saunders tarot she is represented as a goddess guiding a large Star representing spiritual guidance and positive thinking into the centre of a pool of water that represents the questioner's emotions. The star is often referred to as an 'angel' star – to link with a guardian angel watching over you. There are water droplets running down the back of the picture – to represent the questioner's emotions (if we do not know sadness – we never would really appreciate great happiness!) There are 7 smaller stars in the background -There are differing opinions as to the meaning of the 7 smaller stars, but the most commonly held theory is that they represent the 7 Chakras, or energy centres, in the body. Another popular theory is that they represent the Seven Sisters.

overanalyzing things to much to enjoy anything. They could have too many superficial people around them at this time.

THE STAR'S INFLUENCE IN A TAROT SPREAD.

THE QUESTIONER:

If the star comes out in position one in a spread to represent the questioner it would tell us they approach life with a positive attitude, if they have been experiencing blocks in their life, this card in position one says they will get what they wish in any area of their life and things will work out better than they hoped for. If it is reversed it would show they have a pessimistic attitude at the moment and could be experiencing a lot of doubts about the situation they have enquired about.

LOVE

If it comes out as the first card in a spread relating to their Love Life (or in position 2 of a General spread) if they are single it means they are going to be meeting the right partner and will feel very happy, if they are in a relationship they could be having a holiday together. If the ten or page of wands is nearby in the same spread they could be meeting somebody through the internet.

MONEY/FINANCIAL MATTERS

If it comes out in a question relating to money (or position 3 of the general spread) it can show they will have a nice surprise financially, if the wheel of fortune or ten of coins is next to it in the spread they could win some money.

WORK

If it is the first card in a question relating to work,(or position 4 of the general spread.) it can show they will be getting a promotion or working in a way they feel happy about. If the high priestess is near it in a spread they could work as a healer. If the page of cups is nearby they could work in the media.

HOME

If it comes out in a question about moving home, it is a very good card to have and they will get the home of their dreams.

HEALTH

If it comes out in a health spread, (or position 5 of a general spread) It tends to mean they could use crystal healing. If the tower is next to it, It also means they should be careful of spraining or breaking their ankles.

POTENTIAL OR NEAR FUTURE

It means that a situation they are enquiring about will go better than they expect. If it is next to the world they could be travelling to America or Australia or another long distance English speaking country.

SPIRITUAL MEANING

It shows the questioner is interested in crystal's and are ready to go onto their spiritual pathway. They could have a native American guide.



Astrological Sign:
Pisces

Planet:Neptune /Moon

Month: February/March

UPRIGHT

KEY POINTS: Confusion, Hidden things, Escapism, Psychic, Subconscious mind.

When the Moon appears in a reading, it shows that the Questioner is feeling very muddled and confused. There could be deception around them or secrets that are just about to be revealed. It is a very emotional card, and the Questioner or somebody close to them could be trying to escape reality by either drinking too much or just not facing up to things. They must listen to their intuition, as they will feel very mixed up emotionally. The Moon is a gloomy card and depending on the cards around it, it can mean depression. They would benefit from seeing a Counsellor or professional adviser at this time. The Questioner must be made aware of hidden problems; the surrounding cards should indicate which area of their life needs attention. They should also make sure that they are being honest with their own emotions, both to themselves and other people. This card has a lot of association with women and can indicate hormonal problems or problems with the menstrual cycle. It is a very good card to have if they are developing their psychic or healing ability and it links strongly with reflexology, so is an excellent card to have out if the questioner is planning to study that.

REVERSED THE READING IS INVALID IF THE MOON REVERSED COMES OUT THREE TIMES.

KEY POINTS: Depression, Phobias, Blocks, Deceit, Addiction

Because of its associations with muddle and confusion, if the Moon comes out reversed, it can sometimes mean there are things the cards can't reveal or feel the questioner should not know(look to the surrounding cards) but this is especially so if it comes out at the start of a spread. If it comes out three times reversed during one reading, it means that the whole reading is invalid. Otherwise the Moon reversed can mean that the Questioner is feeling very lonely and has lost their direction. Their subconscious mind could be playing tricks on them and they will be suffering severe mood swings. It can also mean deception that has been going on for a long time, or that the Questioner has been deluding themselves about a particular aspect of their life (e.g. relationship or chosen career) that they are not suited to. It often means that they are in denial about something and could be drinking too much as they feel unable to cope with things. Women could also be causing problems at this time.

The Moon is usually represented by a Dog and a Wolf howling at a full Moon. The Wolf represents our more "animal" instincts, and the Dog is our friendly domestic side. In the White & Saunders pack we see a large moon with a face in profile on it, showing the moons link with our emotions. There is a pool of water resting on the moon, again linking to the 'ripples' of our emotions. A crayfish or lobster is crawling out of the water which represents our subconscious emotions and (the crayfish) hidden fears can be our own worst enemy. The water is being poured from a jug that has the symbol of Aquarius on it – linking to the change of leaving the age of Pisces and moving into the 'age of Aquarius'. The two fish in the corner are the symbol of Pisces star sign – which this card links to – but also again to represent the confusion associated with change. It is a gloomy card, showing that the questioner is being kept in the dark about something and has a lot of deep emotions to deal with.

THE MOON'S INFLUENCE IN A TAROT SPREAD.

THE QUESTIONER:

If the moon comes out in position one in a spread to represent the questioner, it can show they are very confused about everything at the moment and there could be a lot happening in their life that they feel unsure about. Because it links to psychic intuition, it would advise the questioner to follow their gut instinct rather than relying on other people's advice. If it comes out reversed in the first position the cards are blocking the reading and if it comes out reversed three times during the hour long reading - the whole reading would be invalid.

LOVE

If it comes out as the first card in a spread relating to their Love Life (or in position 2 of a General spread it can show they are not being shown the whole picture about a person they are involved with - the surrounding cards would indicate if there is deception going on around the questioner or if it is their own subconscious fears causing problems. But if the devil or temperance cards come out directly next to it, they would have to be careful not to become involved with a partner that drinks too much or takes drugs.

MONEY/FINANCIAL MATTERS

If it comes out in a question relating to money (or position 3 of the general spread) If the seven of swords is directly next to the moon it would show they are being deceived. and they should avoid signing contracts until they are more clear of facts

WORK

If it is the first card in a question relating to work,(or position 4 of the general spread.) it can indicate there are changes going on around them behind the scenes with work and they should expect changes. If it is next to the high priestess it can show they work as a therapist as the moon relates to reflexology and hypnosis.

HOME

If it comes out in a question about their home, it usually means things will be a bit tense at home and there could be things about to happen that they are not expecting. They should be careful if buying a new home.

HEALTH

If it comes out in a health spread, (or position 5 of a general spread) it often means they will be needing an x-ray. It usually means the questioner needs reflexology in a general spread, and as it links with women's menstrual cycles, if the empress was next to it, it can also link with female problems, hormones etc.

POTENTIAL OR NEAR FUTURE

It means things will remain unclear for a while and they must trust their intuition.

SPIRITUAL MEANING

It links with psychic development and past life regression, they could be experiencing problems that could be brought about by past life memories.



Astrological Sign:
Aries

Planet Mars

Month: April

UPRIGHT

KEY POINTS: Children, Success, Happiness, Holidays, reiki healing

When the Sun comes out in a reading, it is a very positive card to have. It shows success in any new ventures and happy times ahead. The Questioner can look forward with optimism in anything they are enquiring about. Depending on the surrounding cards, the Sun can mean happy holidays abroad in a warm climate. It has a strong link with children, so again depending on the surrounding cards it can mean success for children, or very happy family times or a new addition to the family. It can often refer to the questioner's grandchildren. If it comes out in a spread relating to health, it shows the questioner could benefit from reiki or colour healing.

REVERSED

KEY POINTS: Disillusionment, unexpected delays, trouble with children

When the Sun comes out reversed, it can still show the questioner can expect a positive outcome to a situation but there will be blocks and delays in their plans, particularly those connected with travel or children. In fact children can be a cause for anxiety when this card is reversed or could be causing friction in the questioner's relationship. Distance could be getting in the way of a relationship developing. The Questioner will have their illusions shattered by people or situations, and although things can still turn out as they wish, it will take a lot of determination from them. They must also make sure they are not acting childishly or making too many unrealistic plans. If they were planning to take a holiday and this card came out they would be better off putting travel plans on the back burner for a while or double checking arrangements.

There are two popular versions of the Sun. The Rider-Waite pack (and many others) shows a child on a white horse in front of a garden of sunflowers, with the Sun bearing down on her. The other version shows twin children playing in a walled garden with the Sun shining. The children represent innocence. In the White & Saunders pack we see a sun shining down on a small baby (representing the questioners inner child) asleep in a bed of flowers resting on a cloud with a white winged horse flying next to it, watching over the baby. The Sun has a peaceful face, to show that the questioner will be feeling happy. The straight lines on the Sun represent the masculine influence, the wavy lines the female influence. The horse links to the five human senses. The red scarf, represents energy, passion and enthusiasm. In the corner of the picture we can see a reiki symbol, as this card links to reiki and inner child healing.

THE SUN'S INFLUENCE IN A TAROT SPREAD.

THE QUESTIONER:

If the sun comes out in position one in a spread to represent the questioner it would tell us they are a positive person that has a 'sunny' disposition. If the world card is next to it in the spread they will be travelling abroad in the near future. If any of the page court cards comes out directly next to it in the spread it shows the questioners children.

LOVE

If it comes out as the first card in a spread relating to their Love Life (or in position 2 of a General spread) it can indicate children will be affecting the relationship. If the ace of cups or ace of wands is directly next to it they could be planning on having a baby. If they are single it means they are going to be meeting somebody that they will be starting a new relationship with, if the world or any coin court card comes out, it would be a dark skinned person, if the knight of swords or wands is next to it - it can indicate a holiday romance.

MONEY/FINANCIAL MATTERS

If it comes out in a question relating to money (or position 3 of the general spread) it is a positive card they could be spending money on a holiday .

WORK

If it is the first card in a question relating to work,(or position 4 of the general spread.) it can indicate they will be working with children, however if the knight of wands is next to it in the spread they could be planning on working abroad.

HOME

If it comes out in a question about moving home, if the world or the knight of wands is directly next to it, they could be planning to move abroad. If they are not planning to move it means they will be decorating their home.

HEALTH

If it comes out in a health spread, (or position 5 of a general spread) it usually means recovery from illness, although it can be a warning of catching an illness usually associated with children, such as chickenpox which can cause an adult a lot of problems. If it comes out reversed it can mean sunburn or skin problems related to sunbathing. It is easy to remember the link with children's illness and overdoing the sunbathing by the child playing in the sun in the picture with no PROTECTION!

POTENTIAL OR NEAR FUTURE

If the world card is next to it in the spread they will be travelling abroad.

SPIRITUAL MEANING

It shows the questioner will be interested in reiki healing and could be working on their inner child.



**Astrological
Sign:
Sagittarius**

**Planet: Pluto &
Jupiter**

Month: December

UPRIGHT

KEY POINTS: Legal matters/divorce, Spiritual growth, elderly relatives

When the Judgement card comes out in a reading, it is the end of a chapter in the Questioner's life. They have done their best in any circumstances they are asking about and they will feel satisfied with the outcome. It does have a strong connection with spiritual matters and shows a new awakening of the questioner's own psychic abilities and a deeper understanding of spiritual beliefs. Because of its rebirth qualities, it shows that there will be a lot of changes in their life, but these will be logical endings such as retirement or divorce in a marriage that has been "dead" for years. It does also have legal meanings, and depending on the surrounding cards it can represent legal dealings, although it usually refers to paperwork procedures (such as divorce or mortgage) rather than big court cases. This card would show that the outcome will be good for the Questioner. Again, depending on the surrounding cards, it can mean the rebirth of a relationship. It can also represent elderly relatives could need extra attention at this time.

REVERSED

KEY POINTS: Regrets, legal problems, materialistic outlook

When the Judgement card comes out reversed in a reading, it shows that the changes going on could have been caused by the Questioner's own actions, but they will not like the outcome. They would not have put enough effort into work or a relationship and will now be feeling regrets because it has failed. Judgement reversed shows that the Questioner or people around them are being too materialistic and losing sight of spiritual or emotional well being. Any legal matters will not go in their favour, but this could be their own fault i.e.; being banned for driving offences, repossession of a property through not sorting debts out etc. It can also mean trouble with elderly relatives and they could feel burdened.

In most packs the symbolism of this card refers to the Day of Judgement, with the dead rising from their graves to the call of the Angel's trumpet. In a lot of older packs, the Angel was replaced by God sitting on a throne in Heaven. In the White & Saunders pack it is represented by 'old father time' holding a young child representing a new phase in the questioner's approach to life. An angel blowing a trumpet is just visible in the corner of the picture, The Angel usually represents Gabriel, but it can also refer to our Guardian Angels. The musical notes of the Trumpet (Om symbol) are there to balance out the Chakras (energy centres) the angel has left a small white feather floating above an hour glass (filled with water to represent emotions changing). The holly 'crown' on his head show us the challenges that have been overcome to reach the level of this rebirth. The young girl is resting to represent the 'inner child' that has been dormant and the white flowers on her head show purity in her thoughts, while the yellow flowers around her heart chakra represent positive emotional growth.

JUDGEMENT'S INFLUENCE IN A TAROT SPREAD.

THE QUESTIONER:

If judgement comes out in position one in a spread to represent the questioner, it can show they have come to the end of a cycle, and are looking forward to new beginnings. Although if it is reversed it can show they are looking back with regret because they didn't do their best in a situation.

LOVE

If it comes out as the first card in a spread relating to their Love Life (or in position 2 of a General spread) it shows they are ending one chapter in their emotional life to start a new one. If the ten of swords or the death card is next to it that shows separations. If the six of cups or ten of coins is next to it they would be caring for elderly relatives.

MONEY/FINANCIAL MATTERS

If it comes out in a question relating to money (or position 3 of the general spread) it shows they are sorting through official paperwork - it usually shows the person is sorting out their pensions and life insurance policies. If the ten of swords is nearby they will be dealing with ex partners and maintenance.

WORK

If it is the first card in a question relating to work, (or position 4 of the general spread.) it will indicate they have had a lot of changes with work. A few years ago judgement meant retirement but nowadays it can show redundancy.

HOME

If it comes out in a question about moving home, it usually means they will be sorting mortgage forms and official paperwork out.

HEALTH

If it comes out in a health spread, (or position 5 of a general spread) it is a warning of joint problems, the part of the body it links with are the legs, hips and knees, if it came out directly next to the tower it could mean an accident that will affect the lower parts of the body. It can indicate rheumatism and arthritis, because of the cards association with elderly people it could be somebody they are caring for that is suffering and not the questioner themselves.

POTENTIAL OR NEAR FUTURE

They are looking forward to a new chapter in their life.

SPIRITUAL MEANING

It shows the questioner will be working with angels (usually angel Gabriel) and can develop a gift of clairaudience (hearing spirit).



Planet: Saturn

The World is usually represented by a woman, or sometimes an androgynous (half man, half woman) figure, surrounded by a wreath of laurel leaves. Each of the four corners depicts a creature - an Angel, a Bull, an Eagle and a Lion - which can relate to the four elements of the Earth, Angels, or the signs of the Zodiac. In the white & Saunders cards the world is represented by the earth, to show the completion of a cycle is affecting the whole planet. The astrological signs show that every person will be affected by change and the planets that are visible are the ones that will be affecting people the most. The merkaber symbol (star shape) links to angel Metatron as he helps with transformation and it also represents the union of two people that become one and spiritual wholeness. The card is often referred to as the universe.

UPRIGHT

KEY POINTS: Completion of a cycle, Travel, Spiritual awareness,

When the World comes out in a reading, it is the completion cycle in the Questioner's life, whereas the Judgement card is the end of a chapter, the World represents the end of a book in their life, it can often represent the end of a 21 year cycle, when there are big lifestyle changes going on for the questioner, such as moving to a new area, children leaving home, retiring from work etc. It is the successful conclusion to any plans. The questioner could be opening up on a spiritual level and will feel a lot more balanced and self-confident and able to deal with any situation they are going through. It is an excellent card to have if they are travelling anywhere.

In love relationship spreads, it shows a coming together of two Souls that feel as one. Also it shows that the Questioner has become more spiritually aware and this will help them in day-to-day matters.

If they were moving home, this card could point to emigration or a completely different way of life for them.

REVERSED

KEY POINTS: Delays, Frustration, Not facing up to things, Boredom

When the World comes out reversed in a reading, it shows that the Questioner will have reoccurring problems that they need to sort out, no matter how painful or difficult this may be. The same day-to-day rut has dragged them down and they need to call on their inner reserves to change their life. Travel plans may be cancelled or they can expect difficulties through travel. Any plans the Questioner is making may have to be put on hold, because of outside circumstances, so at this time any new projects would have to be put on hold or postponed. They will gain fulfilment in the end, but need to take responsibility for the changes in their life. Often when this card comes out reversed in a spread it is advising the questioner to connect with their higher self or ask the universe to help them as they do not need to feel so alone and frustrated.

THE WORLDS INFLUENCE IN A TAROT SPREAD.

THE QUESTIONER:

If the world comes out in position one in a spread to represent the questioner it would tell us they are a positive person that has overcome a lot of challenges but are balanced within. They will affect a lot of people around them in a positive way.

LOVE

If it comes out as the first card in a spread relating to their Love Life (or in position 2 of a General spread) if they are single a new romance will be a complete union of souls, physically, spiritually and mentally, if the sun or any coin court card comes out, it would be with a dark skinned person. However, if the knight of swords or wands is next to it - it can indicate a holiday romance.

MONEY/FINANCIAL MATTERS

If it comes out in a question relating to money (or position 3 of the general spread) it is a positive card they have completed a cycle financially and could benefit from investments.

WORK

If it is the first card in a question relating to work,(or position 4 of the general spread.) it can indicate they could be planning on working abroad, other cards would indicate if this is the case. If judgement or the fool is near it in the spread they will be starting a new career.

HOME

If it comes out in a question about moving home, especially if the knight of wands or six of swords is directly next to it, they could be planning to move abroad. If they are not planning to move abroad it means moving to a new district.

HEALTH

If it comes out in a health spread, (or position 5 of a general spread) it can stand for food poisoning and if the questioner is planning to travel they must be very careful especially if they are going to a country that has malaria etc. If it comes out as the outcome card in a specific health spread, It is usually a very good card to have as it can mean a complete recovery from illness.

POTENTIAL OR NEAR FUTURE

If the sun or star card is next to it in the spread they will be travelling abroad.

SPIRITUAL MEANING

It shows the questioner has completed a karmic learning cycle and will be feeling more centered, their spiritual development is now moving up onto a 'higher' frequency, they should be developing very quickly psychically.